



SAMUEL WOOD



3 Old Street

Ludlow, Shropshire, SY8 1NW

£675 Per Month



Apartment in the town centre of historic Ludlow. The property is part of five apartments in this three storey building.



CONTEMPORARY AGENCY • TRADITIONAL VALUES

propertymark

MAYFAIR
OFFICE.CO.UK

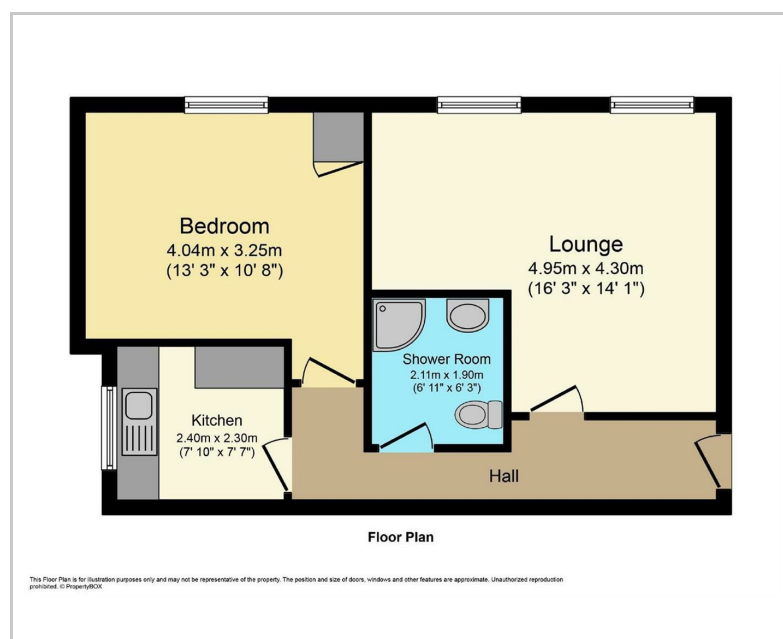
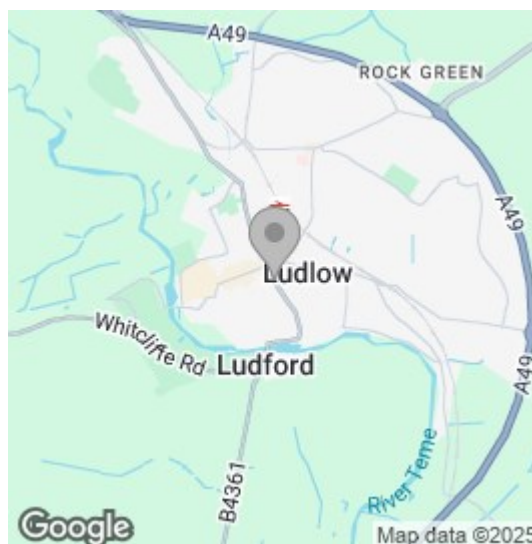
rightmove

onTheMarket.com



Grade II listed I bedroom apartment has accommodation which benefits from an electric heating system and double glazed accommodation briefly includes spacious reception hallway, good sized lounge/dining room, kitchen and double bedroom and shower room.

Area Map



We take every care in preparing our sales details. They are checked and usually verified by the Vendor. We do not guarantee appliances, alarms, electrical fittings, plumbing, showers etc. You must satisfy yourself that they operate correctly. Room sizes are approximate; they are usually taken in metric and converted to imperial. Do not use them to buy carpets or furniture. We cannot verify the tenure, as we do not have access to the legal title; we cannot guarantee boundaries or rights of way so you must take the advice of your legal representative. No person in the employment of or representing Samuel Wood has any authority to make any representation or warranty whatever in relation to this property. If there is any point which is of particular importance to you, please contact the office and we will be pleased to check the information. Do so particularly if contemplating travelling some distance to view. Applicants are advised that the majority of our shots are taken with a wide angle lens.

2 Shoplatch, Shrewsbury, Shropshire, SY1 1HF
Tel: 01743 272710 | shrewsbury@samuelwood.co.uk

www.samuelwood.co.uk